



ACBS GMS PBS

Description

A food for special medical purposes.

A high energy powdered formula with low levels of protein, calcium, chloride, potassium, phosphorus and Vitamin A, containing whey protein, amino acids, carbohydrate, fat, vitamins, minerals, trace elements and the long-chain polyunsaturated fatty acids (LCPs): Arachidonic acid (AA) and Docosahexaenoic acid (DHA).

Indications

For the dietary management of renal failure from birth to 10 years.

Dosage and Administration

To be determined by the clinician or dietitian.

Preparation Guidelines

For bottle fed infants

The standard dilution of 20% is made by adding 1 level scoop of Renastart (approx 7g) to 30ml of water (approx 1fl oz). Please follow these guidelines carefully as incorrect preparation can make your child ill.



1 Wash hands well.



2 Sterilise feeding equipment.



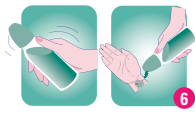
3 Boil fresh water and leave to cool for no more than 30 minutes to ensure it remains at a temperature of at least 70°C.



4 Measure out the required amount of water into the bottle. Do not use artificially softened water or repeatedly boiled water.



5 Using the scoop provided, add the prescribed number of scoops of Renastart into the water, leveling each scoop off with the back of a clean dry knife.



6 Put cap on and shake well. Test the temperature before feeding by shaking a few drops onto the inside of your wrist - the feed should feel cool or warm, but not hot.

Renastart is now ready to use.

Any formula remaining in the bottle after one hour should be discarded. Do not reheat Renastart once feed has started.

Other dilutions, tube-feeding and feeding older children:

To be determined by the clinician or dietitian. Renastart is typically mixed with water as per clinicians/dietitians instructions.

Any feed prepared in advance should be refrigerated and used within 24 hours.

IMPORTANT NOTICE

Must only be consumed by children with proven renal failure under strict medical supervision.

Suitable from birth to 10 years of age.

Not suitable for the sole source of nutrition.

For enteral use only.

Important Feeding Information

Do not heat Renastart in a microwave as uneven heating may occur and could cause scalding.

Do not boil Renastart.

Infants should be supervised at all times when feeding.

Regular teeth cleaning is recommended.

Packaged in a protective atmosphere.

Nutritional Information

		per 100g	per 100ml 20% dilution		per 100g	per 100ml 20% dilution	
Energy	kJ	2071	414	Niacin	mg	5.0	1.0
	kcal	494	99		mg NE	8.0	1.6
Fat	g	23.8	4.8	Folic Acid	µg	86	17.2
of which saturates	g	10	2.0	Vitamin B12	µg	1.0	0.20
monounsaturates	g	10.5	2.1	Pantothenic acid	mg	2.0	0.40
polyunsaturates	g	3.3	0.66	Biotin	µg	22	4.4
Carbohydrate	g	62.5	12.5	Minerals			
of which sugars	g	6.4	1.3	Sodium	mg	242	48.4
Protein	g	7.5	1.5		mmol	10.4	2.1
Salt	g	0.61	0.12	Chloride	mg	87	17.4
Vitamins					mmol	2.4	0.5
Vitamin A (RE)	µg	128	25.6	Potassium	mg	117	23.4
Vitamin D	µg	5.4	1.1		mmol	2.9	0.6
Vitamin E (α TE)	mg	3.0	0.60	Calcium	mg	113	22.6
Vitamin K	µg	30	6.0		mmol	2.8	0.6
Vitamin C	mg	113	22.6	Phosphorus	mg	92	18.4
Thiamin	mg	0.30	0.06	Phosphate	mmol	2.9	0.6
Riboflavin	mg	0.50	0.10	Magnesium	mg	53	10.6
Vitamin B6	mg	0.50	0.10		mmol	2.2	0.4

				per 100g	per 100ml 20% dilution	per 100g	per 100ml 20% dilution
Trace Elements							
Iron	mg	5.1	1.0	L-Glutamine	g	1.20	0.24
Zinc	mg	4.3	0.86	Glycine	g	0.10	0.02
Copper	mg	0.40	0.08	L-Histidine	g	0.23	0.05
Iodine	µg	82	16.4	L-Isoleucine	g	0.49	0.10
Selenium	µg	9.4	1.9	L-Leucine	g	0.85	0.17
Manganese	mg	0.08	0.02	L-Lysine	g	0.63	0.13
Chromium	µg	3.0	0.60	L-Methionine	g	0.15	0.03
Molybdenum	µg	6.0	1.2	L-Phenylalanine	g	0.45	0.09
Others							
Linoleic acid	mg	2800	560	L-Proline	g	0.36	0.07
α linolenic acid	mg	300	60	L-Serine	g	0.30	0.06
DHA	mg	78	16	L-Threonine	g	0.44	0.09
AA	mg	152	30	L-Tryptophan	g	0.18	0.04
Choline	mg	48	9.6	L-Tyrosine	g	0.42	0.08
Inositol	mg	21	4.2	L-Valine	g	0.46	0.09
Amino Acids							
L-Alanine	g	0.33	0.07	L-Carnitine	mg	21	4.2
L-Arginine	g	0.14	0.03	Taurine	mg	50	10
L-Aspartic Acid	g	0.73	0.15				
L-Cystine	g	0.22	0.04				

At 20% dilution**Water content = 85%****Osmolality = 225 mOsm/kg****Potential Renal Solute Load = 125****Storage**

Unopened: Renastart should be stored in a cool, dry place.

Opened: Use within one month.

Allergen Declaration

Contains Milk (Milk protein).

Shelf Life

18 Months.

Pack Size/Weight

400g e tin.

