

	Per 100g as sold	Per 100ml (standard 13.8% dilution)
General		
Energy kJ /kcal	2105/503	293/70
Fat g (44% kcal) of which:	24.6	3.4
saturates g	9.0	1.3
monounsaturates g	9.5	1.3
polyunsaturates g	4.5	0.63
Carbohydrate g (45% kcal) of which:	57	7.9
sugars g	4.0	0.56
Protein g (11% kcal)	13.3	1.9
Salt = Na (g) x 2.5 g	0.45	0.063
Vitamins		
A µg	660	92
D µg	7.5	1.0
K µg	50	7.0
C mg	70	10
Thiamin mg	0.50	0.070
Riboflavin mg	1.1	0.15
B6 mg	0.38	0.053
Niacin mg/mg NE	4.1/9.1	0.57/1.3
Folic acid µg	60	8.4
B12 µg	1.5	0.21
Pantothenic acid mg	3.9	0.54
Biotin µg	13	1.8
E mg α-TE	14	1.9
Minerals		
Sodium mg/mmol	180/7.8	25/1.1
Chloride mg/mmol	420/12	58/1.6
Potassium mg/mmol	570/15	79/2.0
Calcium mg/mmol	410/10	57/1.4
Phosphorus mg	280	39
Phosphate mmol	9.0	1.3
Magnesium mg/mmol	46/1.9	6.4/0.27
Iron mg	5.0	0.70
Zinc mg	5.0	0.70
Copper mg	0.40	0.056
Iodine µg	76	11
Selenium µg	13	1.8
Manganese mg	0.050	0.0070

	Per 100g as sold	Per 100ml (standard 13.8% dilution)
Other		
DHA mg	50	7.0
ARA mg	50	7.0
MCT g	6.0	0.84
α-Linolenic acid mg	450	62
Linoleic acid mg	4000	552
Taurine mg	40	5.6
L-Carnitine mg	7.9	1.1
Choline mg	50	7.0
Inositol mg	35	4.9
Osmolarity	300 mOsm/L	
Potential Renal Solute Load	169 mOsm/L	

NE - Niacin Equivalent
TE - Tocopherol Equivalent

Description

Alfamino® is a hypoallergenic nutritionally complete powdered formula containing amino acids, carbohydrate, fat, vitamins, minerals, trace elements and long chain polyunsaturated fatty acids (LCPs); Arachidonic Acid (ARA) and Docosahexaenoic Acid (DHA). Packaged under a protective atmosphere.



Presentation

400g tin (with a 4.6g scoop).

Indications

ACBS approved, prescribable on FP10 (GP10 in Scotland). Alfamino® is for complete nutritional support from birth or supplementary feeding from 6 months and up to 3 years of age for the dietary management of severe cows' milk allergy and/or multiple food protein allergies.

Ingredients

Glucose Syrup, Vegetable Oils (Sunflower, Rapeseed, Esterified Palm), Amino Acids (L-Arginine-L-Aspartate, L-Lysine Acetate, L-Leucine, L-Proline, L-Glutamine, L-Valine, Glycine, L-Isoleucine, L-Threonine, L-Serine, L-Phenylalanine, L-Tyrosine, L-Histidine, L-Alanine, L-Cystine, L-Tryptophan, Magnesium L-Aspartate, L-Methionine), Medium Chain Triglycerides, Potato Starch, Minerals (Calcium Glycerophosphate, Potassium Chloride, Calcium Citrate, Sodium Citrate, Potassium Citrate, Sodium Phosphate, Magnesium Oxide, Ferrous Sulphate, Zinc Sulphate, Copper Sulphate, Potassium Iodide, Manganese Sulphate, Sodium Selenate), Emulsifier (E472c), Cryptocodinium Cohii Oil (DHA), Mortierella Alpina Oil (ARA), Vitamins (C, E, Niacin, Pantothenic Acid, B2, A, B1, B6, K, Folic Acid, D, B12, Biotin), Choline Bitartrate, Acidity Regulator (E330), Taurine, Myo Inositol, Carnitine.

Administration and Dosage

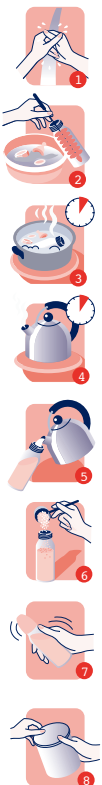
Feeding Table	Quantity per meal		Meals per day
	Water (ml)	No. of scoops*	
Age of Infant			
1-2 weeks	90	3	6
3-4 weeks	120	4	5
2nd month	150	5	5
3-4 months	180	6	5
5-6 months	210	7	5
From 5th (7th) month**	210	7	3-4

* Note: Use only the enclosed scoop.

** A healthcare professional should be consulted before introducing other food to a baby's diet.

Preparation Guidelines

The standard dilution of 13.8% is made by adding 1 level scoop of Alfamino® (approx 4.6g) to 30ml of water (approx 1 fluid oz). Incorrect storage, handling, preparation and feeding can eventually lead to adverse effects for the health of a baby.



1. Wash hands well.
2. Wash bottle, teat and cap.
3. Sterilise equipment (by boiling for 5 minutes or with a cold water sterilising solution).
4. Boil drinking (tap) water. Allow to cool for no more than 30 minutes.
5. Pour exact amount of water (see feeding table), into the sterilised bottle, carefully to avoid scalds, the water is hot.
6. Add exact number of level scoops for age of baby.
7. Place the sterilised teat and cap on the bottle and shake well until powder is fully dissolved. Cool bottle under cold running water until lukewarm. Test the temperature by shaking a few drops onto the inside of your wrist.
8. Close tin tightly after each use and store in a cool dry place.

Shelf life

Shelf life of 24 months from date of manufacture.
Use within 3 weeks of opening.

Important Notice

A food for special medical purposes. Mothers should be encouraged to continue breastfeeding even when their infants have cow's milk protein allergy. This usually requires qualified dietary counseling to completely exclude all sources of cow's milk protein from the mothers' diet. If a decision to use a special formula intended for infants is taken, it is important to give instructions on correct preparation methods, emphasising that unboiled water, unsterilised bottles or incorrect dilution can all lead to illness. Formula for special medical purposes intended for infants must be used under medical supervision.

For oral/enteral use only.

Important feeding information

Do not add any extra powder or water to make feeds stronger or weaker. Using too much or too little powder can make a baby ill. We recommend preparing each feed in individual bottles when required, feed immediately. If there is any unfinished infant milk left after feeding, throw it away.

Always hold the baby while feeding.
Never leave the baby alone during feeding as there is a risk they might choke.



Easy to store scoop is an innovative and unique tin design with a separate storage compartment for the scoop - bringing **added safety, hygiene and convenience** to caregivers and patients.



1 Pull the safety peel and open the lid

2 Hold the spoon and pull open the foil

3 Scoop and level the powder

4 After use, store the spoon in suspension inside the tin as shown

5 Close the tin tightly with the lid